

State-of-the-art Refrigeration Systems:

- Hermetic or semi-hermetic compressors
- Air-cooled or water-cooled condensation systems
- High efficiency evaporators equipped with auto defrost features
- Hot gas defrost
- All metallic casings are in galvanised steel with powder-coating finishes. This enables them to withstand H500 SS test
- Safety systems like high and low pressure cutouts, microprocessor-based thermo controls
- Drain-tray and drain-pipe heaters
- Vibration eliminators in refrigerant piping
- Temperature controllers
- Humidification systems with indicators and controllers

Accessories and customization

Fine-tuned to mach needs:

- Pressure relief valves for freezer rooms
- Ramp for entry at door
- Strip curtains to operate at freezing temperatures
- Without stiffening

Specially-engineered cold rooms for special applications

- High humidity cold rooms for fruit and vegetable storage
- Low humidity cold rooms for seed and hygroscopic material storage
- Humidification and automation systems
- Unique design for generating low humidity environment using specially designed refrigeration systems

Applications

- Milk and dairy industry
- Fruits and vegetable storage
- Floriculture industry
- Seafood industry
- Meat and poultry industry
- Egg processing
- Food processing industry
- Pharmaceutical storage
- Hotels and hospitality industry
- Food retail and service
- Retail distribution (cold chain)



Cold Room Doors



Manufacturing Plant- Unit 1
PEB/Continous Sandwich Panel Production Line
Survey no.162,163,164/2,&167,
Kalukondapalli Village,
Thally Road,
Hosur - 635114.

Manufacturing Plant- Unit 3
Steel Purlin/Steel Decking/ Steel Roofing Production Line
Gat No.262, Alandi Phata,
Opp. Hotel Gandharva,
Nanekarwadi, Chakan,
Pune- 410501

Manufacturing Plant, Unit 5
All Types of Continous Sandwich Puf Panel Production Line.
Survey NO. 192, Paikki khata No 254 and survey No 212 Paikki 2 village chancharvadi, Taluka: Sanand, District: Ahmedabad - 382213

Head Office
Manufacturing Plant- Unit 2
Steel Roofing Production Line
65/9-10, N.R. Road
Bangalore - 560 027

Manufacturing Plant, Unit 4
Clean Room Wall And CeilingPanel/Cold Storage/ Clean Rooms Doors & Steel Doors Production line
Plot NO. 345,
Harohalli II Phase Ind. Area,
Harohalli Kanakapura Taluk,
Ramanagar Dist,
PIN - 562112.

www.cleanroomsolutions.co.in
www.alfarooingsolutions.com

Branch offices :

Chennai
7, 1st Floor, Alsa Mall, No.149,
Montieth Road, Egmore,
Chennai - 600008.

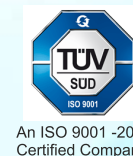
Hyderabad
Door No.4-3-181 to 191,
Above - Lakshmi Vilas Bank,
Mahankali Street RANIGUNJ,
Secunderabad - 500 003.

Kochi
48/1775, Geethanjali Junction
Near Vyttila, Cochin - 682 019

Ph : 080-40717111/112/113/114
Fax: 080-40717121

Toll-free No: 1800 103 9242

email: sales@asbs.in



ALFA PEB LIMITED.

ALFA COLD ROOMS/ DOORS & COLD CHAIN SOLUTIONS



www.coldstorageolution.in



Alfa Cold Rooms

We are the leading manufacturer & suppliers in PEB since 1991 and pioneers in manufacturing of sandwich puf panels in continuos line manufacturing line process. We have extended our services in providing supreme range of solutions for cold chain solutions & clean rooms.

Alfa offers Modular Cold Rooms and Turnkey solutions for large cold storages with PUF Insulated Panels and caters to all types of cooling needs for industries like Food processing, Hospitality, Warehouses, Food Retail, Dairy & Ice cream industry, Meat, Chicken & Fish processing industry, Floriculture, pharmaceuticals and others. Alfa specializes in wide range of refrigeration suitable for COLD CHAIN SOLUTIONS. We have supported by wide engineering expertise, innovation design skills with sphere knowledge.

Types of Panels

Tongue And Groove :

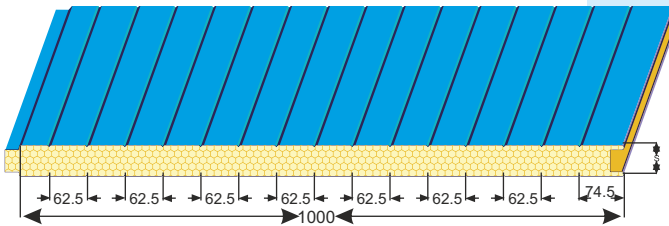
Rigid Polyurethane Foam Insulated Panels Suitable for both ceiling and walling Application.

Alfa Cold Storage Panels :

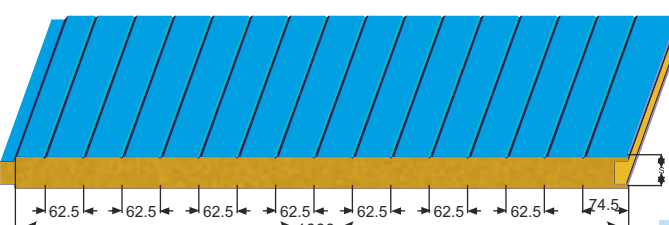
Alfa cold storage panels has been designed to provide a complete solution to the requirements of the cold storage industry are available with self expanding seal joints.

PRODUCTS

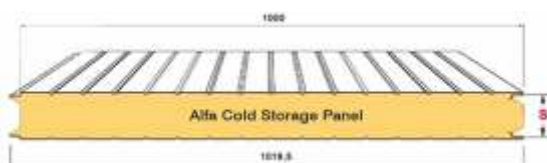
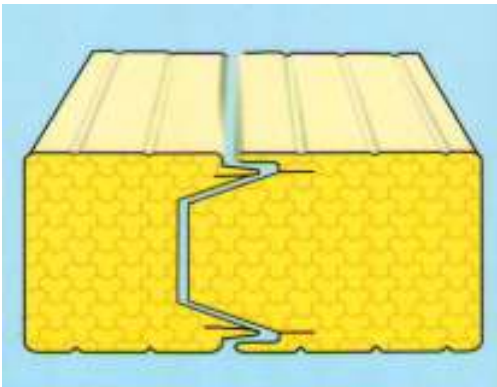
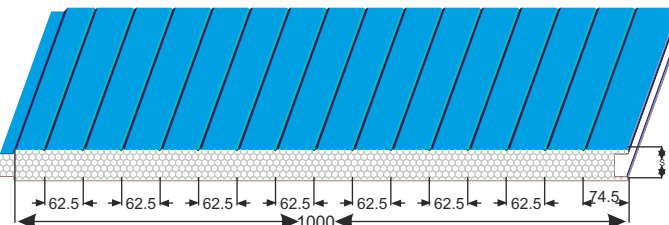
PU/PIR Sandwich PUF Panels



Rock Wool Sandwich Panels

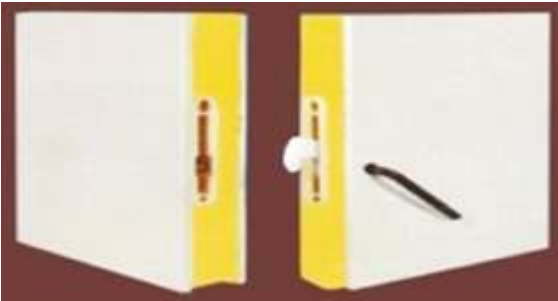


Sandwich EPS Panels



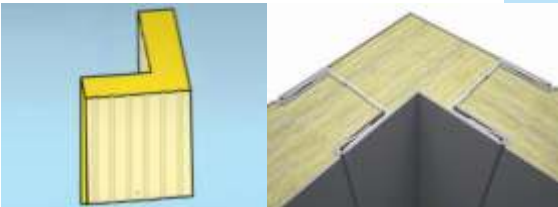
Camlock Panel:

Camlock panels performs Airtight Seal in panels preferred choice for the Food, Cold Storage, Government, Industrial, Medical, & Scientific Research industries, who demand the ultimate in Climate & Atmosphere control.



Corner Panel

Insulated corner panels facilitate joint



Panel Specification

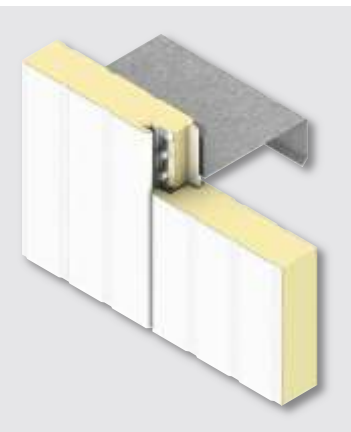
Exterior Profile	Corrugated pattern (micro rib / ribbed) & plain
Panel Thickness	30/40/50/60/80/100/120/150 mm
Lengths	2-15 m. max.
Surface Finish	Pre painted / Stainless steel
Standard Colours	White and customised colour against order

PUF Slab:

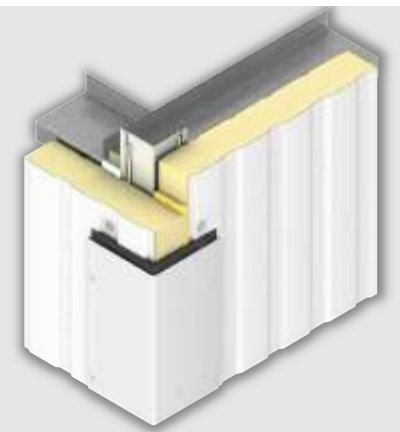
Rigid Polyurethane Foam Insulated Panels Suitable For Cold Room Floor Application



JOINARY DETAILS



Panel Joint



Outside Corner Flush Trim



Inside Corner Flush Trim

COLD ROOM DOORS

Alfa cold room doors offers a top quality cold room and freezer doors, The door construction and fittings are specially designed for all kind of cold rooms and fulfill the environmental requirements of that industry as well as being able to withstand rough treatment. The door leaf panels are injected with high pressure polyurethane. All doors have a smooth metal surface which can be easily and hygienically cleaned.

Types of Cold Room Doors

- Swing Door
- Swing Freezer Door
- Hatch Door
- Sliding Door - Manual / Auto

Cold Room Sliding Doors



Cold Room Double Doors



Door Sizes (in mm):

➤ 750X2000	➤ 1000X2100	➤ 1500x2500	➤ 1500x2400	➤ 2000X2500	➤ 2200x3000
➤ 900X2100	➤ 1200x2100	➤ 1800x2000	➤ 1800x2400	➤ 2000x3000	

Shutter Thickness:

Standard - 0.6mm for the shutter

View Glass:

Double Glazed Rectangular 200 x 300mm, 450 x 750mm

Infill:

Polyurethane Foam / Rock wool / EPS

Materials:

Pre Painted Galvanised Steel (PPGI) and Stainless Steel (304 Grade in number 4 finish)

Accessories:

1. View port
2. Heater for 80 mm and above
3. Bottom thresh hold

Hatch Doors



Cold Room single Doors

